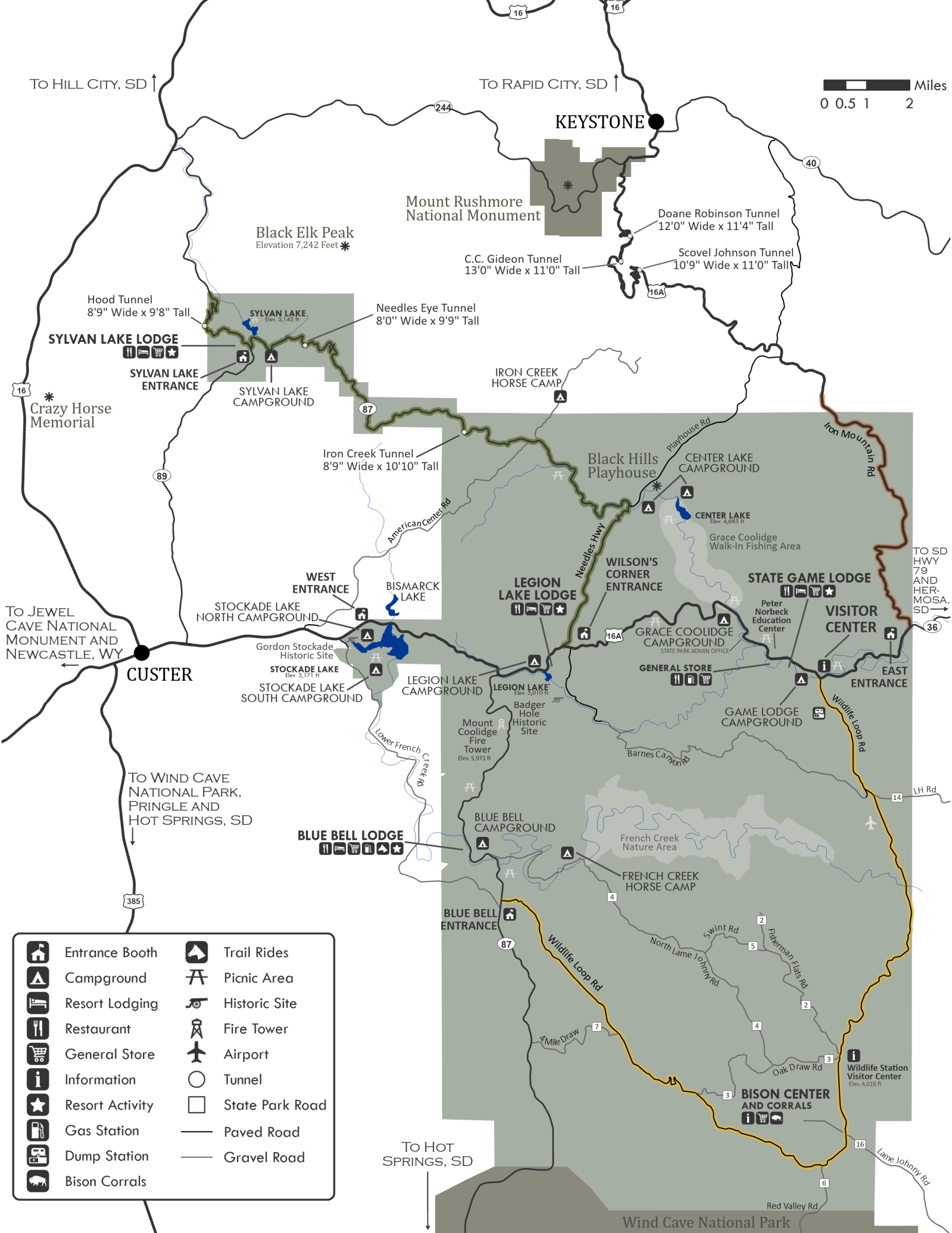


To HILL CITY, SD ↑

To RAPID CITY, SD ↑

Miles
0 0.5 1 2



KEYSTONE

Mount Rushmore National Monument

Black Elk Peak
Elevation 7,242 Feet *

Doane Robinson Tunnel
12'0" Wide x 11'4" Tall

C.C. Gideon Tunnel
13'0" Wide x 11'0" Tall

Scovel Johnson Tunnel
10'9" Wide x 11'0" Tall

Hood Tunnel
8'9" Wide x 9'8" Tall

Needles Eye Tunnel
8'0" Wide x 9'9" Tall

SYLVAN LAKE LODGE

SYLVAN LAKE ENTRANCE

SYLVAN LAKE CAMPGROUND

IRON CREEK HORSE CAMP

Iron Creek Tunnel
8'9" Wide x 10'10" Tall

Black Hills Playhouse

CENTER LAKE CAMPGROUND

CENTER LAKE
Elev. 4,685 ft

Grace Coolidge Walk-In Fishing Area

Crazy Horse Memorial

To JEWEL CAVE NATIONAL MONUMENT AND NEWCASTLE, WY

CUSTER

STOCKADE LAKE NORTH CAMPGROUND

WEST ENTRANCE

BISMARCK LAKE

LEGION LAKE LODGE

WILSON'S CORNER ENTRANCE

STATE GAME LODGE

VISITOR CENTER

Gordon Stockade Historic Site

STOCKADE LAKE
Elev. 5,171 ft

STOCKADE LAKE SOUTH CAMPGROUND

LEGION LAKE CAMPGROUND

LEGION LAKE
Elev. 5,010 ft

GENERAL STORE

GRACE COOLIDGE CAMPGROUND
STATE PARK ADMIN OFFICE

GAME LODGE CAMPGROUND

EAST ENTRANCE

To WIND CAVE NATIONAL PARK, PRINGLE AND HOT SPRINGS, SD

BLUE BELL LODGE

BLUE BELL CAMPGROUND

FRENCH CREEK NATURE AREA

FRENCH CREEK HORSE CAMP

BLUE BELL ENTRANCE

BISON CENTER AND CORRALS

Wildlife Station Visitor Center
Elev. 4,016 ft

To HOT SPRINGS, SD

Wind Cave National Park

- | | | | |
|--|-----------------|--|-----------------|
| | Entrance Booth | | Trail Rides |
| | Campground | | Picnic Area |
| | Resort Lodging | | Historic Site |
| | Restaurant | | Fire Tower |
| | General Store | | Airport |
| | Information | | Tunnel |
| | Resort Activity | | State Park Road |
| | Gas Station | | Paved Road |
| | Dump Station | | Gravel Road |
| | Bison Corrals | | |